

## IMT-SS285 HALL EFFECT SPEED SENSOR



### Description

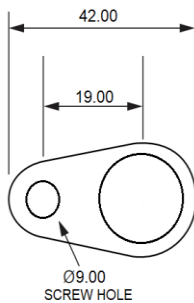
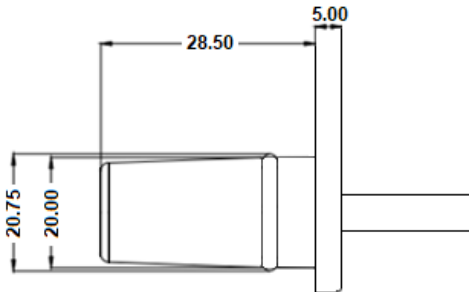
The IMT-SS285 is a robust hall effect sensor for gears. It is protected against automotive environments. It can operate up to 36V and read gears up to 15kHz. Ideally suited to wheels and transmission gear reading and automotive applications.

### Features

- Ferrous target speed sensing
- Protection against severe and automotive environments
- Short circuit and reverse voltage Protection

### Dimensions

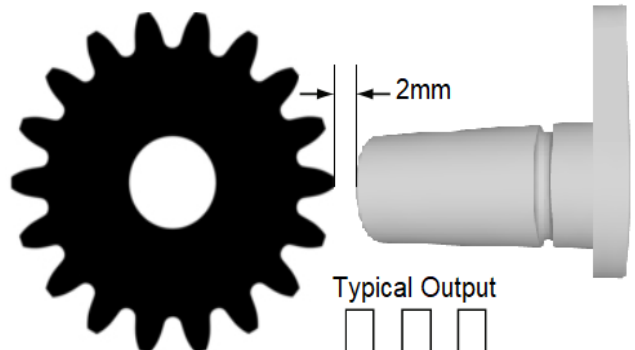
Dimensions in mm.



### Applications

- Wheel, transmission and camshaft speed sensing
- Tractor
- Construction Equipment
- Geartooth sensor
- Industrial
- Automotive

### Application Example





## IMT-SS285 HALL EFFECT SPEED SENSOR

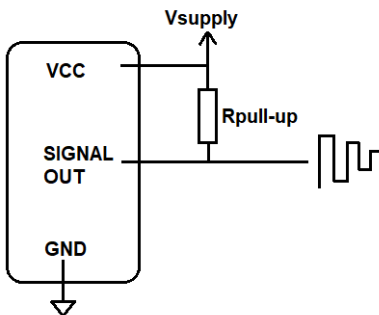
### Product Details

Parameter	Unit	Value
Supply Voltage	Vdc	8-32
Switching Speed	kHz	0-14
Sensing Distance	mm	0-2
Sensing Type		Hall Effect
Housing Material		PC
Temperature	°C	-40 / +120
Output Type	Requires pull-up resistor (10k-22k)	Open Drain

### Termination



### Pull-up Resistor



### Cable Length

Can be designed according to OEM request.

Standard size is 100 mm including connector.