

## IMT-SS707 HALL EFFECT SPEED SENSOR

### Description

The IMT-SS707 is a robust hall effect sensor for gears. It is protected against automotive environments. It can operate up to 36V and read gears up to 15kHz. Ideally suited to wheels and transmission gear reading and automotive applications.

### Features

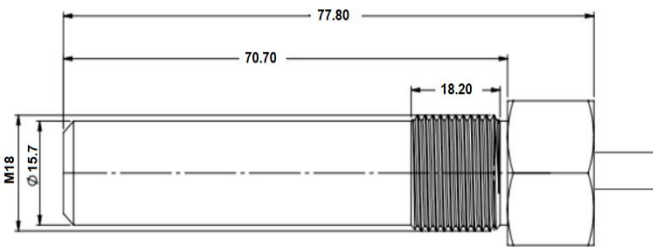
- Ferrous target speed sensing
- Protection against severe and automotive environments
- Short circuit and reverse voltage protection

### Applications

- Wheel, transmission and camshaft speed sensing
- Tractor
- Construction Equipment

### Dimensions

Dimensions in mm.

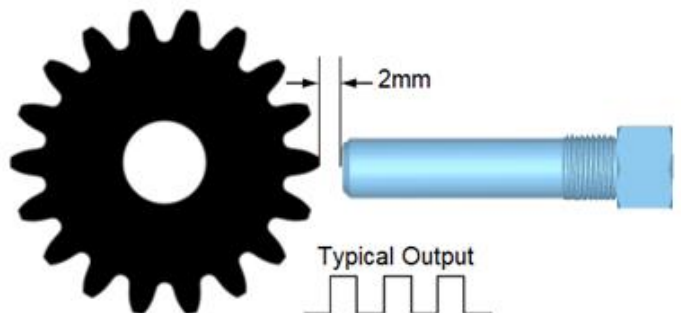
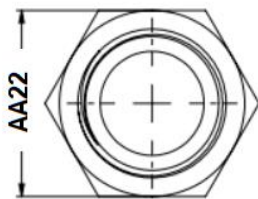


Gear tooth sensor

Industrial

Automotive

### Application Example



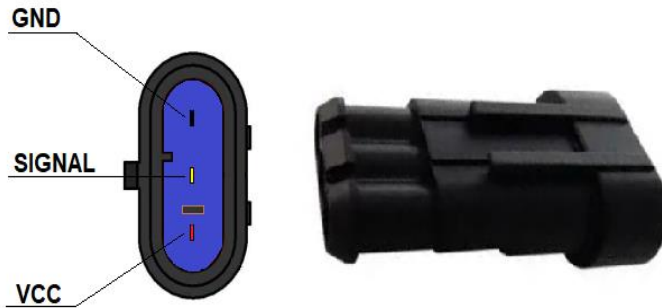


## IMT-SS707 HALL EFFECT SPEED SENSOR

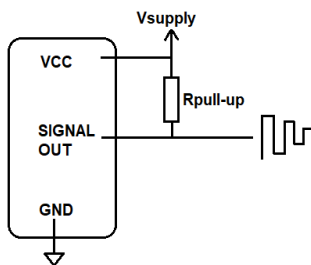
### Product Details

Parameter	Unit	Value
Supply Voltage	Vdc	8-32
Switching Speed	kHz	0-14
Sensing Distance	mm	0-2
Sensing Type		Hall Effect
Housing Material		CuZn39Pb3 - Brass
Temperature	°C	-40 / +120
Output Type	Requires pull-up resistor (10k-22k)	Open Drain

### Termination



### Pull-up Resistor



### Cable Length

Can be designed according to OEM request.

Standard size is 300 mm including connector.